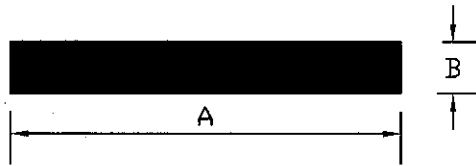


# EXTRUSION

# VALCO

## FLATS

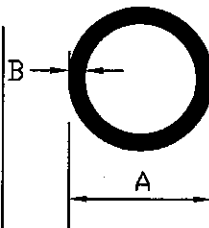
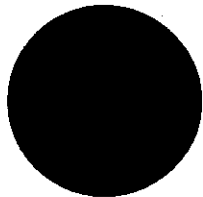


SEC	A	B	Wt/m	Wt/12'	SEC	A	B	Wt/m	Wt/12'
11566	6.50	3.50	0.06	0.23	11576	50.00	30.00	4.05	14.82
11592	12.00	3.00	0.97	0.36	11580	50.00	40.00	5.46	19.98
11585	12.00	5.00	0.16	0.60	11532	50.80	6.30	0.86	3.17
11501	12.00	6.00	0.19	0.71	11537	50.80	12.70	1.74	6.39
11563	14.50	8.50	0.33	1.22	11574	50.80	25.40	3.48	12.77
11590	16.00	3.00	0.13	0.49	11593	60.00	15.00	2.42	8.89
11562	17.00	4.00	0.18	0.67	11587	60.00	20.00	3.27	11.96
11589	18.00	3.00	0.15	0.55	11529	61.00	3.00	0.49	1.81
11586	18.00	7.50	0.37	1.35	11567	63.00	6.00	1.10	0.38
11564	18.00	9.00	0.44	1.60	11538	63.00	10.00	1.70	6.24
11569	19.00	2.80	0.14	0.53	11539	63.00	12.00	2.04	7.48
11570	19.00	3.80	0.19	0.71	11565	63.50	31.75	5.51	20.16
11502	19.00	5.00	0.14	0.94	11541	66.00	5.00	0.894	3.27
11503	19.00	6.30	0.32	1.18	11523	66.00	6.00	1.075	3.93
11588	19.00	12.70	0.68	2.50	11524	66.00	8.00	1.432	5.24
11504	20.00	2.50	0.24	0.49	11540	66.00	10.00	1.43	6.52
11505	20.00	10.00	0.54	1.98	11571	67.00	4.00	0.73	2.68
11506	25.00	3.00	0.20	0.74	11576	69.85	12.70	2.40	8.48
11591	25.00	4.00	0.28	1.02	11542	75.00	6.00	1.22	4.45
11507	25.00	5.00	0.34	1.24	11544	75.00	10.00	2.03	7.42
11508	25.00	6.00	0.41	1.48	11546	75.00	12.00	2.43	8.91
11509	25.00	10.00	0.68	2.47	11543	80.00	8.00	1.73	6.33
11510	25.00	12.00	0.81	2.97	11545	80.00	10.00	2.16	7.92
11594	25.40	3.18	0.23	0.85	11547	80.00	12.00	2.59	9.50
11514	30.00	2.00	0.16	0.59	11577	89.00	6.35	1.53	5.59
11518	30.00	3.00	0.25	0.90	11548	100.00	6.00	1.62	5.94
11511	31.70	6.30	0.54	1.98	11582	100.00	8.00	2.19	8.02
11512	31.70	10.00	0.86	3.14	11549	100.00	10.00	2.70	11.88
11513	31.70	12.00	1.03	3.77	11551	100.00	10.00	3.24	9.90
11581	31.75	9.52	0.83	3.06	11550	101.60	12.70	3.48	12.75
11583	32.00	5.00	0.45	1.65	11572	101.60	19.05	5.22	19.12
11575	34.92	9.52	0.89	3.28	11555	125.00	6.00	2.03	7.42
11519	35.00	3.00	0.28	1.03	11558	125.00	10.00	3.38	12.37
11516	38.00	3.00	0.31	1.13	11559	125.00	12.00	4.05	14.85
11515	38.00	6.00	0.62	2.26	11552	150.00	6.00	2.43	8.91
11520	38.00	10.00	1.03	3.76	11556	150.00	10.00	4.05	14.85
11517	38.00	12.00	1.23	4.51	11557	150.00	12.00	4.86	17.82
11525	35.00	3.00	0.28	1.04	11568	150.00	20.00	8.20	30.00
11521	40.00	5.00	0.54	1.98	11553	152.50	6.30	2.61	9.55
11522	40.00	10.00	1.08	3.96	11560	152.50	12.70	5.23	19.17
11533	48.00	5.80	0.76	2.78	11584	200.00	8.00	4.41	16.14
11530	50.00	3.00	0.41	1.48	11578	200.00	10.00	5.30	19.40
11531	50.00	6.00	0.81	2.97	11579	200.00	12.00	6.48	23.71
11534	50.00	10.00	1.35	4.95					
11536	50.00	12.00	1.62	5.94					

# EXTRUSION

# VALCO

## RODS AND TUBES

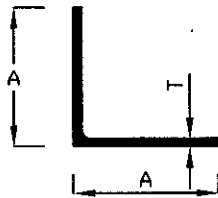


SEC	D	Wt/m	Wt/12'	SEC	A	B	Wt/m	Wt/12'
11701	6.20	0.08	0.30	12165	6.00	0.80	0.04	0.14
11702	5.90	0.08	0.28	12149	6.30	1.00	0.04	0.18
11703	7.80	0.13	0.47	12168	7.80	1.10	0.08	2.92
11705	8.00	0.14	0.50	12148	8.00	1.00	0.06	0.28
11708	8.50	0.15	0.56	12147	8.00	2.25	0.11	0.40
11709	8.72	0.16	0.58	12169	8.20	1.35	0.09	3.29
11711	8.85	0.17	0.61	12170	8.40	1.20	0.09	3.29
11712	9.00	0.17	0.63	12151	9.00	0.50	0.04	0.13
11713	9.20	0.18	0.66	12153	10.00	1.20	0.19	0.68
11722	9.50	0.20	0.72	12154	11.00	3.25	0.22	0.80
11723	9.85	0.21	0.75	12155	12.00	0.50	0.11	0.40
11724	10.00	0.21	0.78	12152	12.00	1.00	0.09	0.34
11728	10.85	0.25	0.91	12167	12.70	2.55	0.24	0.87
11730	11.50	0.28	1.03	12157	14.00	3.25	0.30	1.09
11729	11.00	0.26	0.94	12160	16.00	0.80	0.10	0.38
11733	11.35	0.27	1.00	12135	16.00	3.15	0.34	1.26
11730	11.50	0.28	1.03	12304	17.00	0.80	0.11	0.40
11734	11.90	0.30	1.10	12104	19.00	0.65	0.10	0.37
11735	12.00	0.31	1.12	12105	19.00	0.85	0.13	0.48
11736	12.30	0.32	1.18	12106	19.00	1.55	0.23	0.84
11737	12.50	0.55	1.21	12164	19.80	1.90	0.29	1.07
11738	14.20	0.43	1.58	12107	20.00	2.00	0.31	1.12
11740	14.80	0.46	1.68	12108	20.00	2.50	0.37	1.36
11741	15.10	0.48	1.77	12110	22.00	1.20	0.21	0.78
11742	15.45	0.51	1.85	12109	22.00	1.50	0.28	1.02
11743	17.30	0.63	2.30	12136	25.00	0.90	0.19	0.69
11746	19.10	0.77	2.83	12118	25.00	2.50	0.48	1.75
11749	20.00	0.85	3.11	12117	25.00	2.00	0.39	1.42
11750	22.00	1.03	3.76	12301	25.40	1.25	0.25	0.93
11751	23.00	1.12	4.11	12305	26.20	6.00	1.03	3.77
11753	25.00	1.32	4.86	12156	28.00	0.75	0.17	0.65
11755	30.00	1.91	6.99	12306	28.20	6.00	1.13	4.13
11758	31.75	2.14	7.83	12302	28.60	1.25	0.29	1.06
11759	32.00	2.17	7.96	12158	28.80	2.00	0.45	1.66
11765	38.10	3.08	11.28	12125	30.00	0.85	0.21	0.77
11767	42.00	3.74	13.71	12307	30.00	7.90	1.48	5.42
11768	45.00	4.29	15.73	12113	31.75	1.20	0.31	1.14
11771	50.80	5.47	20.02	12114	32.00	1.60	0.41	1.51
				12119	32.00	2.50	0.63	2.29
				12308	32.20	6.00	1.33	4.88
				12309	32.50	9.15	1.81	6.62
				12112	33.00	3.50	0.88	3.21
				12137	35.00	0.90	0.27	0.98
				12122	35.00	5.00	1.27	4.66
				12310	35.00	10.40	2.17	7.94
				12124	38.00	1.25	0.39	1.43
				12162	40.00	1.40	0.46	1.68
				12132	40.00	2.50	0.79	2.91
				12127	41.00	0.80	0.27	1.00
				12126	41.00	3.50	1.11	4.08
				12129	45.00	3.00	1.07	3.91
				12128	48.00	3.00	1.14	4.20
				12131	50.00	2.50	1.01	3.69
				12130	50.00	12.50	3.97	14.57
				12133	57.00	3.00	1.38	5.03
				12163	60.00	3.00	1.46	5.34
				12134	62.00	2.50	1.26	4.62
				12166	63.00	3.15	1.62	5.95
				12121	76.20	1.27	0.81	2.96
				12161	139.70	6.35	7.20	26.28

# EXTRUSION

# VALCO

## ANGLES



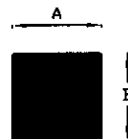
SEC	A	T	Wt/m	Wt/12'
11344	15.30	1.50	0.12	0.43
11318	20.00	2.00	0.21	0.76
11301	22.50	0.90	0.11	0.39
11320	22.50	1.50	0.18	0.65
11304	25.00	1.60	0.21	0.77
11305	25.00	2.00	0.26	0.95
11306	25.00	3.00	0.38	1.40
11311	30.00	2.50	0.39	1.42
11329	37.00	1.50	0.29	1.08
11313	37.00	2.20	0.43	1.56
11317	37.00	3.00	0.58	2.11
11324	37.00	5.00	0.93	3.41
11326	50.00	3.00	0.78	2.88
11325	50.00	6.00	1.52	5.58
11328	55.00	2.50	0.73	2.66
17628	80.00	2.00	0.84	3.07



SEC	A	B	T	Wt/m	Wt/12'
11341	14.00	12.00	1.60	0.11	0.39
11303	22.00	12.00	3.00	0.25	0.92
11302	24.00	12.40	1.40	0.18	0.65
11321	25.00	10.00	2.00	0.18	0.65
11316	25.00	15.00	2.50	0.25	0.93
11308	25.00	19.00	3.00	0.33	1.22
11319	30.00	20.00	4.00	0.50	1.82
11309	38.00	25.00	2.70	0.44	1.61
11310	38.00	25.00	2.10	0.35	1.27
11312	38.00	25.00	3.00	0.49	1.78
11314	38.00	25.00	5.00	0.78	2.87
11315	55.00	35.00	2.50	0.59	2.17
11327	65.00	40.00	8.00	2.10	7.68



SEC	A	Wt/m	Wt/12'
11792	9.50	0.21	0.77
11793	11.30	0.29	1.09
11794	12.40	0.35	1.31
11791	19.00	0.84	3.08

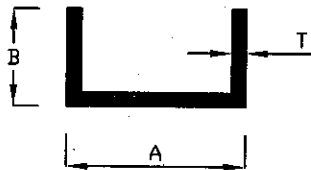


SEC	A	B	Wt/m
11951	12.50	12.50	0.42
11958	49.90	49.90	6.72

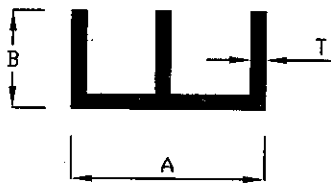
# EXTRUSION

# VALCO

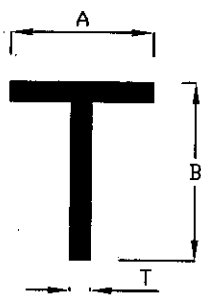
## CHANNELS & TEES



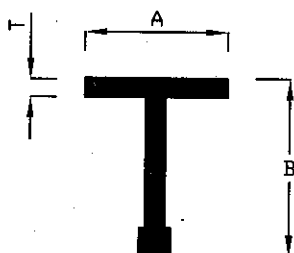
SEC	A	B	T	Wt/m	Wt/12'
11402	8.00	8.00	0.80	0.05	0.18
11403	9.00	8.00	0.60	0.04	0.15
11407	12.00	12.00	0.70	0.07	0.24
11408	12.00	9.00	2.00	0.14	0.51
11410	12.00	9.00	1.50	0.11	0.40
17101	15.00	15.00	2.00	0.20	0.73
11411	20.00	11.00	0.45	0.05	0.18
17116	20.00	14.50	2.50	0.30	1.09
11447	25.00	12.00	1.80	0.22	0.81
11446	25.00	12.00	2.00	0.24	0.89
17117	32.00	20.00	2.50	0.45	1.66
17119	52.00	20.00	2.50	0.59	2.15
11413	67.30	40.00	3.00	1.14	4.17
11448	88.00	25.00	3.00	1.07	3.92
11450	80.00	25.00	3.00	1.00	3.68
15023	100.00	25.00	1.60	0.63	2.32
15026	90.00	23.00	1.20	0.43	1.59
17285	38.00	38.00	3.20	0.93	3.41



SEC	A	B	T	Wt/m	Wt/12'
11421	25.40	12.60	0.60	0.10	0.36
11422	25.40	12.60	0.75	0.12	0.45
11423	25.40	12.60	0.90	0.15	0.54
11424	25.40	12.60	1.10	0.18	0.65
11426	24.00	12.00	0.60	0.09	0.35
11427	24.00	12.00	0.80	0.12	0.46
11428	24.00	12.00	0.95	0.15	0.54
11429	24.00	12.00	1.15	0.18	0.64



SEC	A	B	T	Wt/m	Wt/12'
11201	12.00	12.00	0.90	0.06	0.21
11206	19.00	19.00	0.80	0.08	0.29
11209	23.00	18.00	1.00	0.11	0.40
11208	24.00	24.00	1.00	0.13	0.47
11215	38.00	25.00	2.80	0.46	1.67
11217	38.00	38.00	1.50	0.32	1.18
11216	38.00	38.00	3.00	0.59	2.17
11219	25.00	38.00	3.00	0.49	1.78

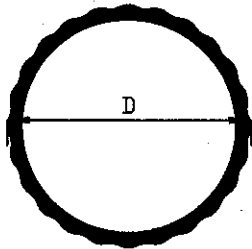


SEC	A	B	T	Wt/m	Wt/12'
11221	25.00	25.00	0.90	0.14	0.50
11222	25.00	25.00	1.50	0.21	0.76
11224	25.00	38.00	1.00	0.17	0.61
11225	25.00	38.00	1.40	0.23	0.85
11226	25.00	38.00	1.60	0.27	0.97
11227	38.00	38.00	1.60	0.32	1.18
11228	38.00	38.00	2.10	0.42	1.54
11229	38.00	50.00	1.40	0.35	1.28

# EXTRUSION

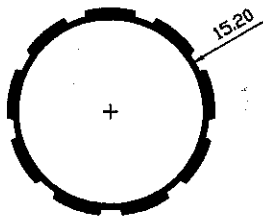
# VALCO

## MISC COMMERCIAL SECTIONS

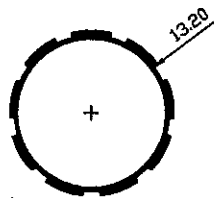


SEC	O.D	I.D	Wt/m	Wt/12'
12192	18.00	16.80	0.08	0.29
12186	25.00	23.50	0.13	0.48
12194	25.00	22.60	0.21	0.80
12187	25.00	22.20	0.27	0.99
12188	25.00	21.80	0.33	1.21
12189	25.00	21.00	0.40	1.45
12174	26.80	24.80	0.22	0.79
12173	27.40	24.90	0.28	1.01
12181	28.00	26.40	0.18	0.53
12182	28.00	26.00	0.22	0.65
12183	28.00	25.60	0.26	0.95
12193	29.00	25.50	0.38	1.39
12172	32.00	30.00	0.22	0.95
12171	32.40	29.60	0.36	1.32
12190	38.00	36.00	0.28	1.05
12191	38.00	35.60	0.35	1.28
12196	50.90	46.90	0.78	2.88

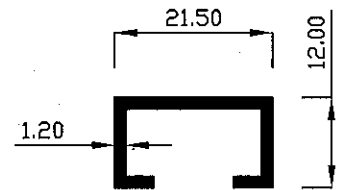
12196 0.261Kg/m



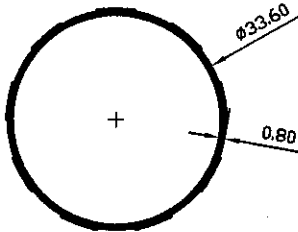
12197 0.195Kg/m



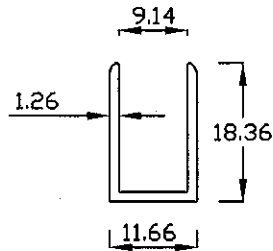
11409 0.151Kg/m



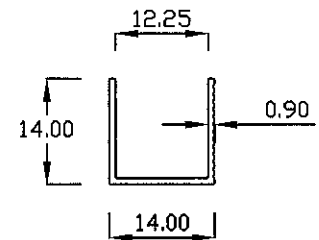
12303 0.276 Kg/m



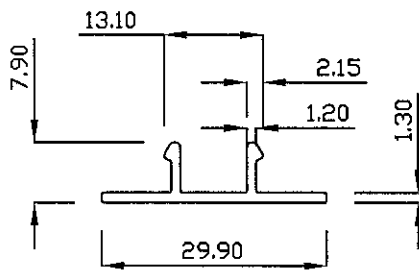
11415 0.328 Kg/m



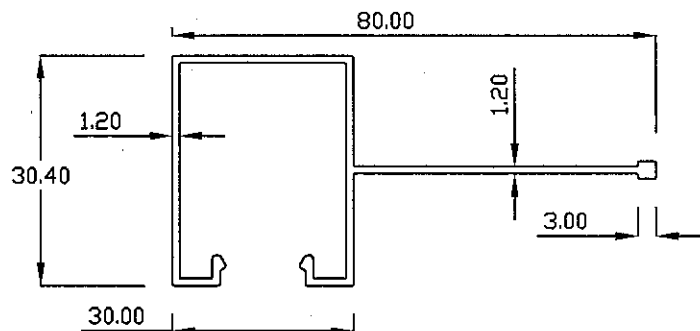
18047 0.325 Kg/12'



17569 0.162Kg/m



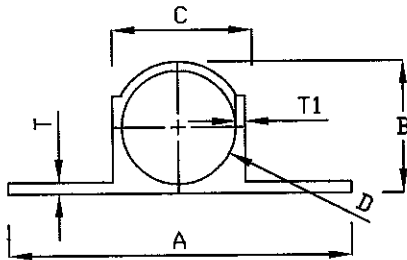
17570 0.590Kg/m



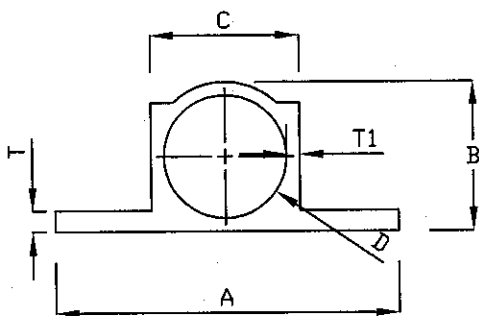
# EXTRUSION

# VALCO

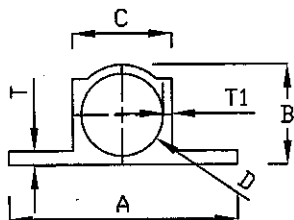
## TOWER BOLT



SEC	A	B	C	D	T	T1	Wt/12"
11639	33.50	11.70	11.70	10.50	0.70	0.60	0.51
11638	35.00	12.30	12.20	11.00	0.70	0.60	0.56
11665	35.00	12.70	12.70	11.40	1.05	0.65	0.67
11630	35.10	12.65	12.40	11.00	1.20	0.70	0.74
11658	35.20	12.35	12.20	11.10	0.65	0.55	0.55
11631	35.50	12.80	12.60	11.00	1.30	0.80	0.80
11632	35.50	13.50	13.30	11.50	1.60	0.90	0.93
11633	36.10	14.00	13.80	11.80	1.45	1.00	1.00
11655	36.50	13.20	13.20	11.50	1.80	0.85	0.95
11634	36.60	14.70	14.40	12.00	1.75	1.20	1.10
11640	36.60	12.90	12.90	11.50	1.90	0.70	0.90
11635	36.30	14.90	14.60	11.80	1.90	1.40	1.30
11636	37.10	15.10	14.90	12.30	1.70	1.30	1.20
11637	36.80	15.50	15.30	12.20	2.00	1.50	1.37
11642	37.80	15.80	15.80	12.60	2.00	1.60	1.45
11643	37.80	15.60	15.60	12.40	2.10	1.60	1.43
11644	37.80	16.40	16.40	12.80	1.90	1.80	1.54
11645	37.50	16.00	16.00	12.60	2.20	1.75	1.60
11641	37.50	16.00	16.00	12.70	2.30	1.75	1.65
11646	37.80	16.90	16.90	12.70	2.30	2.10	1.79
11649	37.80	16.80	16.80	13.20	2.60	2.00	1.85
11648	37.80	17.60	17.60	12.30	2.50	2.20	1.95
11656	37.30	15.50	15.50	12.30	2.40	1.60	1.37
11657	37.30	15.50	15.50	12.40	2.50	1.80	1.45
11664	37.50	16.00	16.00	12.70	2.50	2.20	1.75



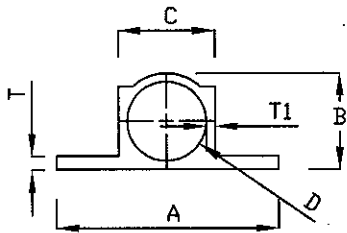
SEC	A	B	C	D	T	T1	Wt/12"
11654	37.90	16.80	16.60	12.70	2.55	1.95	1.84
11651	40.00	14.20	14.20	11.60	1.50	1.00	1.05
11652	43.80	16.00	15.80	13.00	1.90	1.20	1.45
11659	43.90	14.70	14.80	12.50	1.40	1.15	1.19
11653	44.00	16.30	16.30	13.20	2.00	1.40	1.55



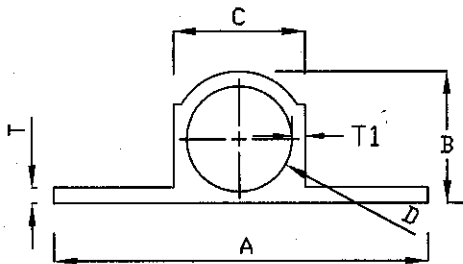
SEC	A	B	C	D	T	T1	Wt/12"
11661	31.80	12.40	12.40	10.30	1.00	1.00	0.77
11662	32.00	12.50	12.50	10.50	1.10	1.10	0.83

# EXTRUSION TOWER BOLT

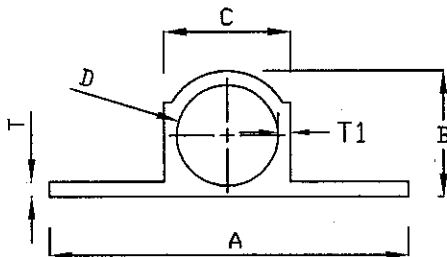
# VALCO



SEC	A	B	C	D	T	T1	Wt/12"
11603	23.50	10.00	10.00	8.60	0.80	0.70	0.45
11606	24.50	10.50	10.50	8.70	1.45	0.90	0.60
11608	24.50	10.80	10.80	8.75	1.50	1.00	0.65
11605	24.70	10.00	10.00	8.20	0.90	0.90	0.52
11609	25.40	10.70	10.70	8.50	1.60	1.10	0.72
11607	25.40	11.00	11.00	8.80	1.70	1.20	0.78



SEC	A	B	C	D	T	T1	Wt/12"
11610	27.50	10.50	10.50	9.20	0.85	0.65	0.44
11682	29.90	10.50	10.50	9.30	0.90	0.70	0.52
11611	30.50	11.55	11.55	10.20	1.10	0.70	0.60
11612	30.00	11.20	11.20	9.70	1.10	0.75	0.60
11613	30.10	11.40	11.40	9.80	1.20	0.80	0.66
11614	30.10	11.60	11.60	9.80	1.20	0.90	0.68
11615	31.80	11.50	11.50	9.80	1.20	0.85	0.75
11616	30.70	11.10	11.10	9.50	1.70	0.80	0.77
11618	31.80	12.20	12.20	10.20	1.50	1.00	0.83
11619	31.50	12.20	12.20	10.00	1.60	1.10	0.89

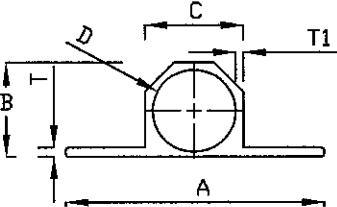


SEC	A	B	C	D	T	T1	Wt/12"
11691	29.40	11.70	11.30	10.10	0.80	0.60	0.54
11620	31.00	12.40	12.40	12.40	1.00	0.75	0.66
11629	31.00	12.40	12.40	12.40	1.20	0.80	0.70
11621	31.20	12.40	12.40	10.80	1.20	0.80	0.73
11622	31.50	12.60	12.60	10.80	1.30	0.90	0.82
11623	31.50	12.80	12.80	10.80	1.40	1.00	0.85
11624	31.50	12.80	12.80	10.80	1.50	1.00	0.89
11625	31.50	13.30	13.50	11.00	1.50	1.15	0.93
11626	32.50	13.30	13.50	11.00	1.60	1.15	0.97
11627	32.50	13.40	13.40	13.40	1.75	1.20	1.01
11628	31.30	13.10	13.10	11.00	1.20	1.03	0.82

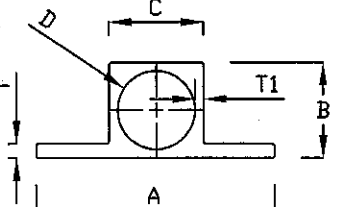
# EXTRUSION

# VALCO

## TOWER BOLT

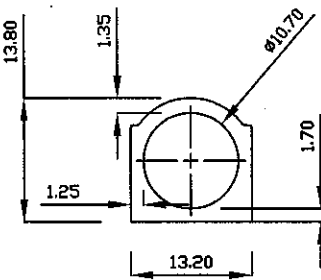


SEC	A	B	C	D	T	T1	Wt/12"
11671	29.80	11.00	11.00	9.80	0.75	0.60	0.49
11672	30.40	11.40	11.40	9.60	1.00	1.00	0.65
11674	30.40	12.00	11.90	10.10	1.35	1.35	0.85
11675	31.70	13.00	13.00	10.80	1.30	1.10	0.86
11683	31.90	13.25	13.20	10.60	1.50	1.30	0.98
11684	35.00	12.20	12.30	11.00	1.05	0.65	0.65
11676	35.80	13.40	13.20	11.20	1.20	1.00	0.88
11677	36.00	13.60	13.60	11.30	1.80	1.20	1.10
11680	36.80	13.20	13.10	11.50	1.70	0.80	0.92
11678	37.70	15.50	15.30	12.50	1.65	1.40	1.40
11681	38.20	14.80	14.60	12.20	2.20	1.20	1.28
11679	43.90	15.80	16.50	13.30	2.00	2.20	1.59

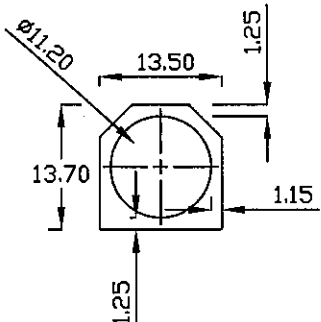


SEC	A	B	C	D	T	T1	Wt/12"
11693	25.40	10.10	10.10	8.30	1.50	0.90	0.70
11696	31.70	12.70	12.70	10.80	1.50	0.90	0.96
11692	37.00	15.30	15.30	12.30	2.00	1.50	1.56

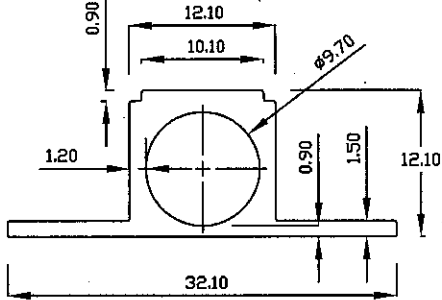
11666      0.206 Kg/m



11663      0.192 Kg/m



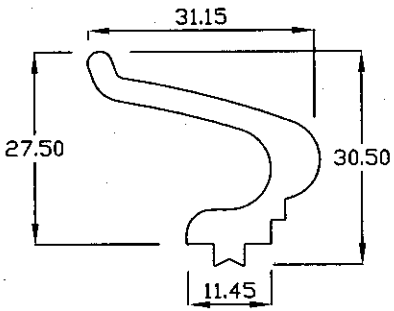
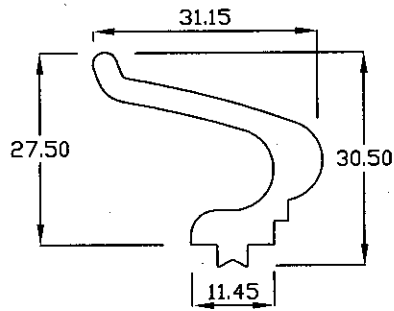
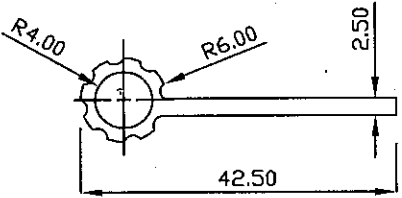
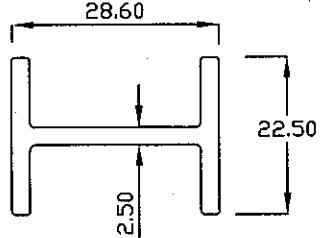
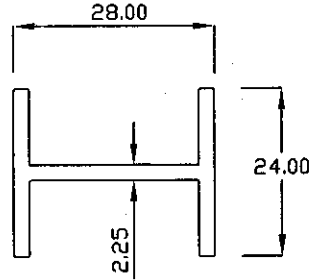
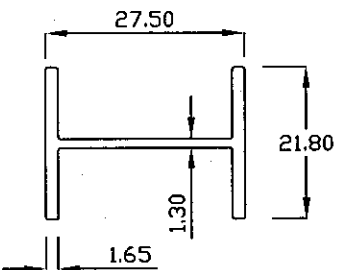
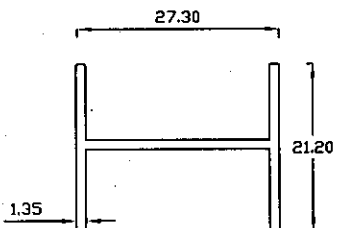
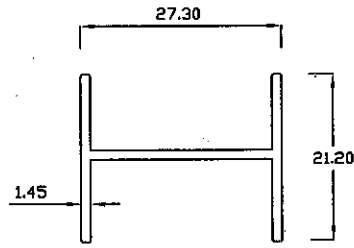
11667      0.272 Kg/m



# EXTRUSION

# VALCO

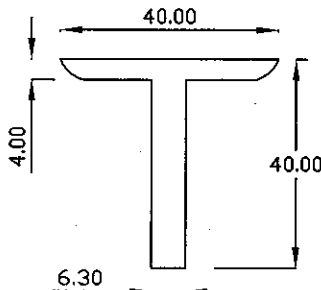
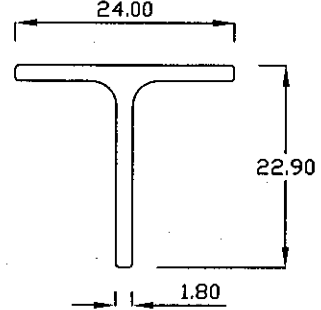
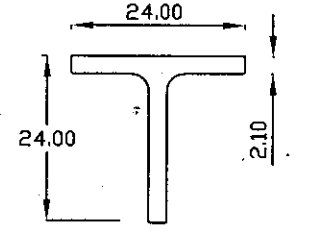
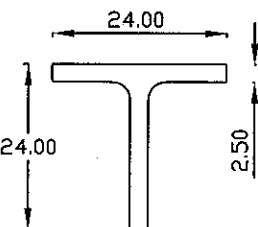
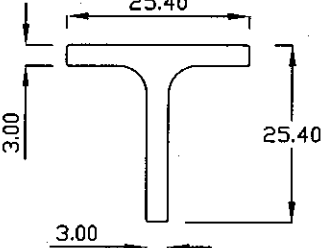
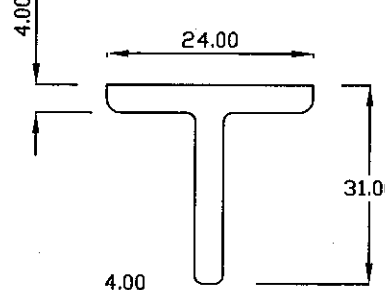
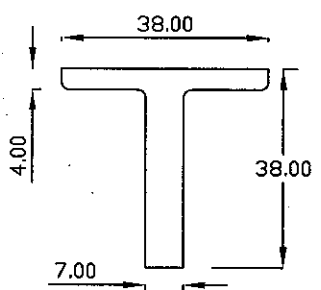
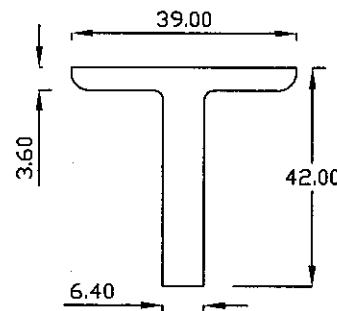
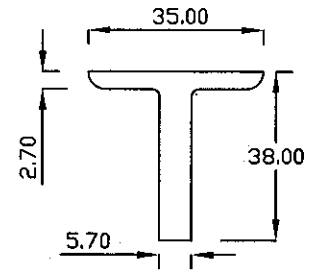
## HARDWARES

<p>12011 0.634Kg/m</p> 	<p>12012 0.918Kg/m</p> 	<p>12005 0.415Kg/m</p> 
<p>17136 0.471Kg/m</p> 	<p>17144 0.429Kg/m</p> 	<p>17145 0.305Kg/m</p> 
<p>17146 0.232Kg/m</p> 	<p>17147 0.290Kg/m</p> 	

# EXTRUSION

# VALCO

## TEES

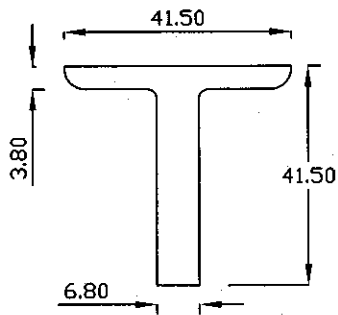
<p>11234 1.04Kg/m</p> 	<p>11236 0.22Kg/m</p> 	<p>11237 0.32Kg/m</p> 
<p>11238 0.32Kg/m</p> 	<p>11239 0.40Kg/m</p> 	<p>11241 0.61 Kg/m</p> 
<p>11242 1.06Kg/m</p> 	<p>11243 1.000 Kg/m</p> 	<p>11244 0.765 Kg/m</p> 

# EXTRUSION

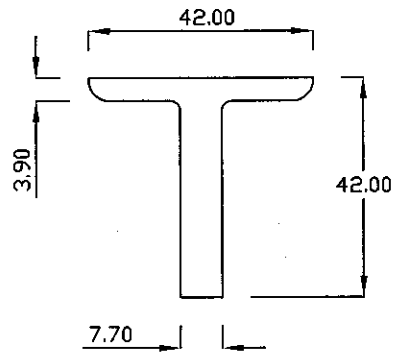
# VALCO

## TEES

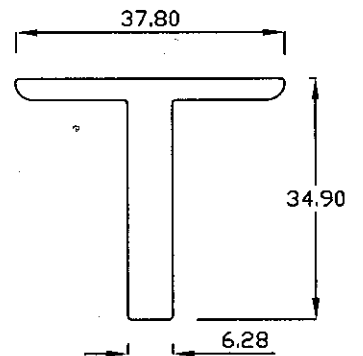
11245 1.092 Kg/m



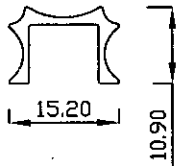
11247 1.174 Kg/m



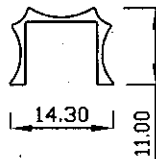
11248 0.85 Kg/m



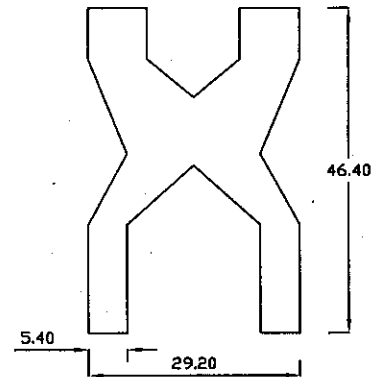
11441 0.123Kg/m



11442 0.098Kg/m



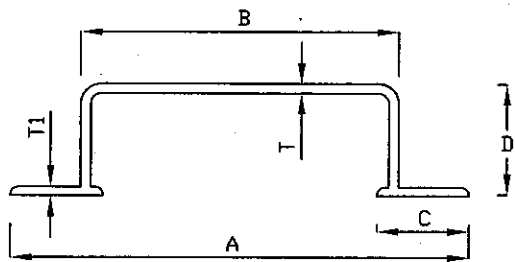
12014 1.890Kg/m



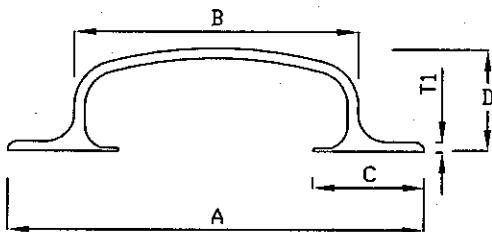
# EXTRUSION

# VALCO

## HANDLES

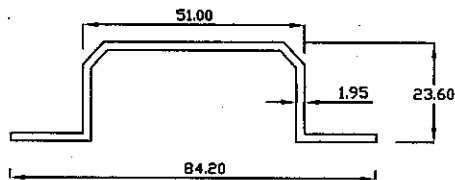


SEC	A	B	C	D	T	T1	Wt/12"
11855	100.00	68.00	22.00	25.00	3.30	2.90	3.90
11868	120.00	74.00	27.00	25.00	2.50	1.60	3.30
11860	120.00	75.00	28.00	25.00	3.00	1.80	4.00
11865	124.00	78.00	28.00	26.00	3.20	2.00	4.80
11861	124.00	78.00	28.00	26.00	3.50	2.50	5.50
11862	127.00	83.00	28.00	31.00	4.00	3.00	6.10
11863	127.00	86.00	29.00	32.50	4.30	3.30	6.80
11864	127.00	86.00	29.00	32.50	4.50	3.50	7.50
11870	144.00	102.00	27.00	25.00	3.00	1.80	4.80
11875	145.00	104.00	27.00	27.00	3.20	2.20	5.50
11871	146.00	104.00	27.00	30.00	3.70	2.40	6.40
11872	147.00	104.00	28.00	30.00	4.10	2.60	7.10
11873	148.00	104.00	28.00	31.00	4.40	3.20	7.70
11874	148.00	107.00	28.00	31.00	4.70	3.70	8.10

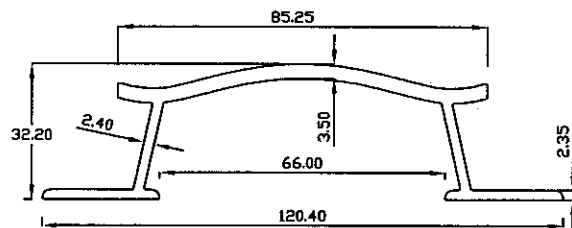


SEC	A	B	C	D	T	T1	Wt/12"
11831	100.00	66.00	31.00	31.00	2.00	1.50	4.00
11832	123.00	73.00	31.00	31.00	3.00	2.10	4.00
11833	125.00	75.00	31.00	31.00	3.20	2.60	4.80
11834	125.00	75.00	31.00	31.00	3.30	2.70	5.30
11835	125.00	75.00	32.00	32.00	4.00	3.50	6.20
11836	125.00	75.00	32.00	32.00	4.30	3.70	6.60
11838	126.00	78.00	33.50	28.00	1.75	1.55	3.40
11839	118.50	79.00	25.70	30.50	2.90	1.20	4.49
11842	145.00	98.00	36.00	36.00	3.50	2.20	4.90
11843	147.00	99.00	37.00	37.00	4.10	2.50	5.60
11844	147.00	99.00	37.00	37.00	4.30	2.70	6.40
11845	150.00	100.00	38.00	38.00	4.00	3.50	7.20
11846	150.00	100.00	38.00	38.00	4.40	3.70	7.60
11849	140.50	82.00	30.00	34.00	2.90	1.70	4.05

11851 0.685Kg/m



11852 1.418 Kg/m



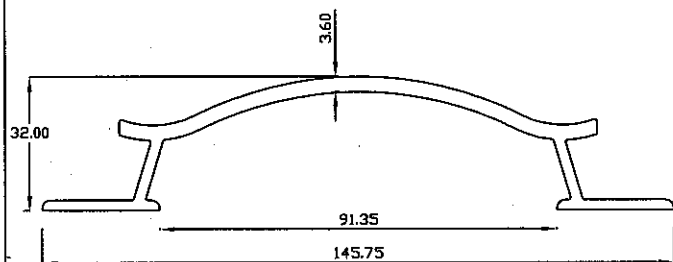
# EXTRUSION

# VALCO

## HANDLES

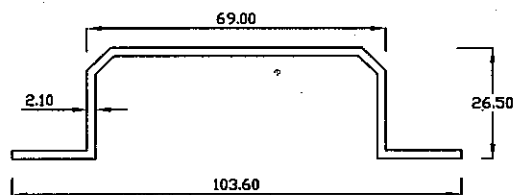
11853

1.693 Kg/mt



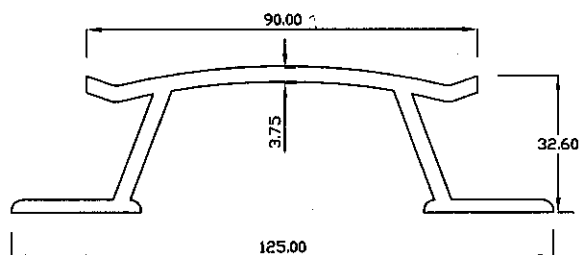
11854

0.827Kg/m



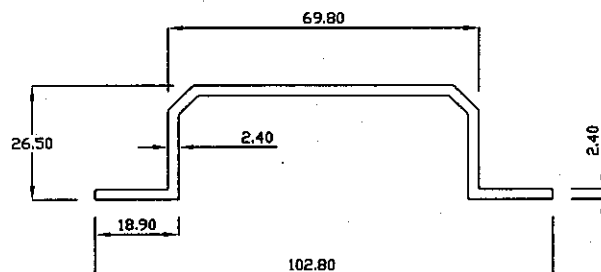
11857

0.765Kg/m



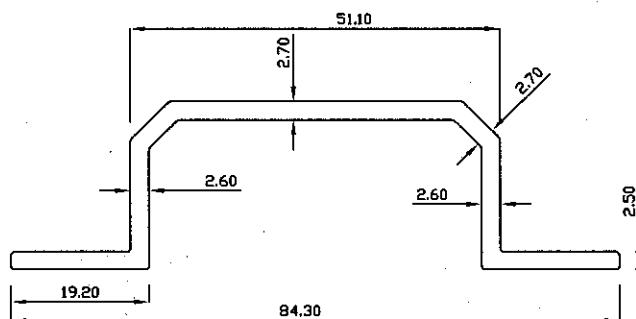
11856

0.940 Kg/m



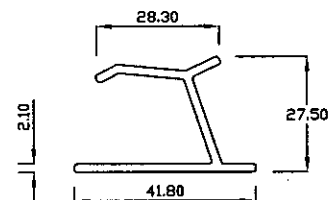
11858

0.860 Kg/m



11885

0.521Kg/m



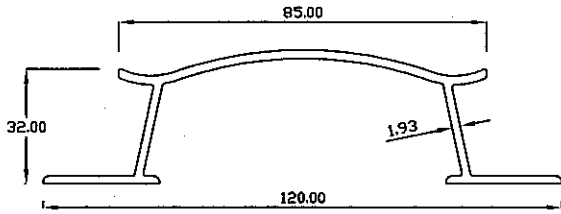
# EXTRUSION

# VALCO

## HANDLES

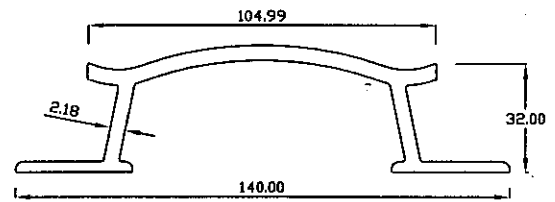
11881

1.00Kg/mt



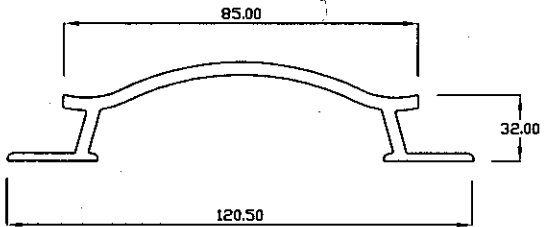
11882

1.22Kg/m



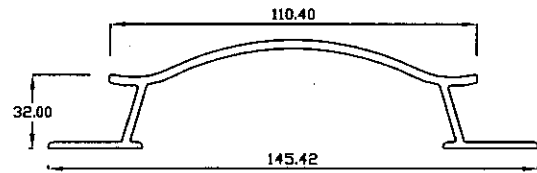
11883

1.71 Kg/mt

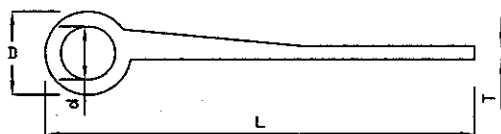


11884

1.95Kg/m

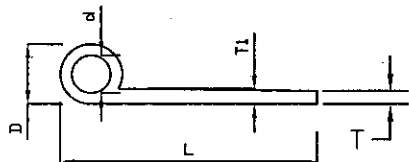


## ALDROPS



SEC	L	D	d	T	Wt/12'
11901	99.00	19.85	12.65	3.20	3.90
11900	101.35	18.70	12.80	2.95	4.20
11903	127.00	25.00	15.70	3.50	5.90
11907	125.00	22.00	15.50	3.00	5.20
11908	129.50	24.90	16.00	3.60	6.60
11909	129.90	25.80	16.20	3.75	7.10
11910	100.80	18.10	12.80	2.35	3.29

## HINGES



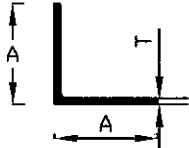
SEC	L	D	d	T	T1	Wt/12'
12001	35.40	8.60	5.40	1.90	2.20	0.85
12002	35.60	8.70	5.50	2.05	2.40	0.95
12003	35.60	8.90	5.50	2.50	2.50	1.15
12004	37.00	11.00	5.25	3.40	4.00	1.80
12006	38.10	12.70	5.00	3.96	4.75	2.45
12024	25.40	6.60	3.40	2.40	2.40	0.71
12025	34.90	8.50	5.60	1.65	1.90	0.81
12026	35.20	8.75	5.60	2.00	2.00	0.91
12028	36.30	9.20	5.90	2.80	2.80	1.17
12029	36.40	9.30	5.50	2.90	3.25	1.30

# EXTRUSION

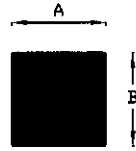
# VALCO

## COMMERCIAL NEW ADDITION SECTIONS

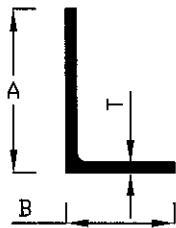
### ANGLES



SEC	A	T	Wt/m	Wt/12'
11307	25.00	1.10	0.16	0.60
11352	50.00	5.00	1.30	4.76
11351	64.00	6.50	2.15	7.87

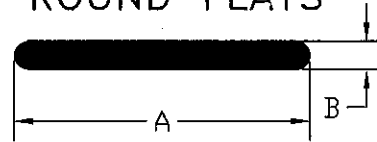


SEC	A	B	Wt/m
11952	10.00	10.00	0.27
11954	38.10	38.10	3.92
11955	44.45	44.45	5.33



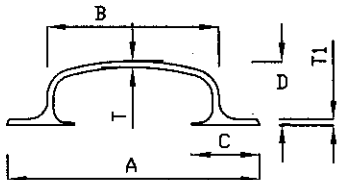
SEC	A	B	T	Wt/m	Wt/12'
11372	46.00	30.00	5.00	0.98	3.59
11371	76.50	38.00	6.50	1.92	7.03

### ROUND FLATS

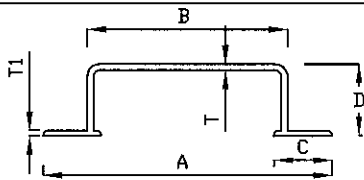


SEC	A	B	Wt/m	Wt/12'
12562	15.00	6.00	0.23	0.84
12570	18.60	3.90	0.19	0.70
12502	18.60	4.00	0.24	0.88
18274	19.90	7.90	0.40	1.46
12503	20.00	6.00	0.31	1.13
12508	25.00	6.00	0.39	1.44
18064	25.30	10.50	0.60	2.20
12573	25.40	4.75	0.32	1.18
12511	30.00	6.00	0.47	1.74
12521	40.00	6.00	0.63	2.32
12531	50.00	6.00	0.75	2.77
12567	60.00	6.00	0.95	3.48
12582	70.00	6.00	1.07	3.91
12543	80.00	6.00	1.27	4.66
12583	90.00	6.00	1.38	5.07
12548	100.00	5.90	1.58	4.32
12554	120.00	3.00	0.99	3.62
12555	125.00	6.00	2.01	7.35
12552	150.00	6.00	2.41	8.85
12581	175.00	5.90	2.77	10.16
12580	200.00	5.90	3.17	11.62

### HANDLE



SEC	A	B	C	D	T	T1	Wt/12"
11837	100.00	64.00	28.00	28.00	3.00	2.50	4.13
11830	101.40	66.00	24.85	28.30	1.90	1.40	2.90



SEC	A	B	C	D	T	T1	Wt/12"
11866	122.00	76.20	28.00	30.00	2.95	2.20	4.40
11876	145.00	99.20	28.00	30.00	3.30	2.20	5.40